

CERTIFIED LAND CORNER RECORDATION

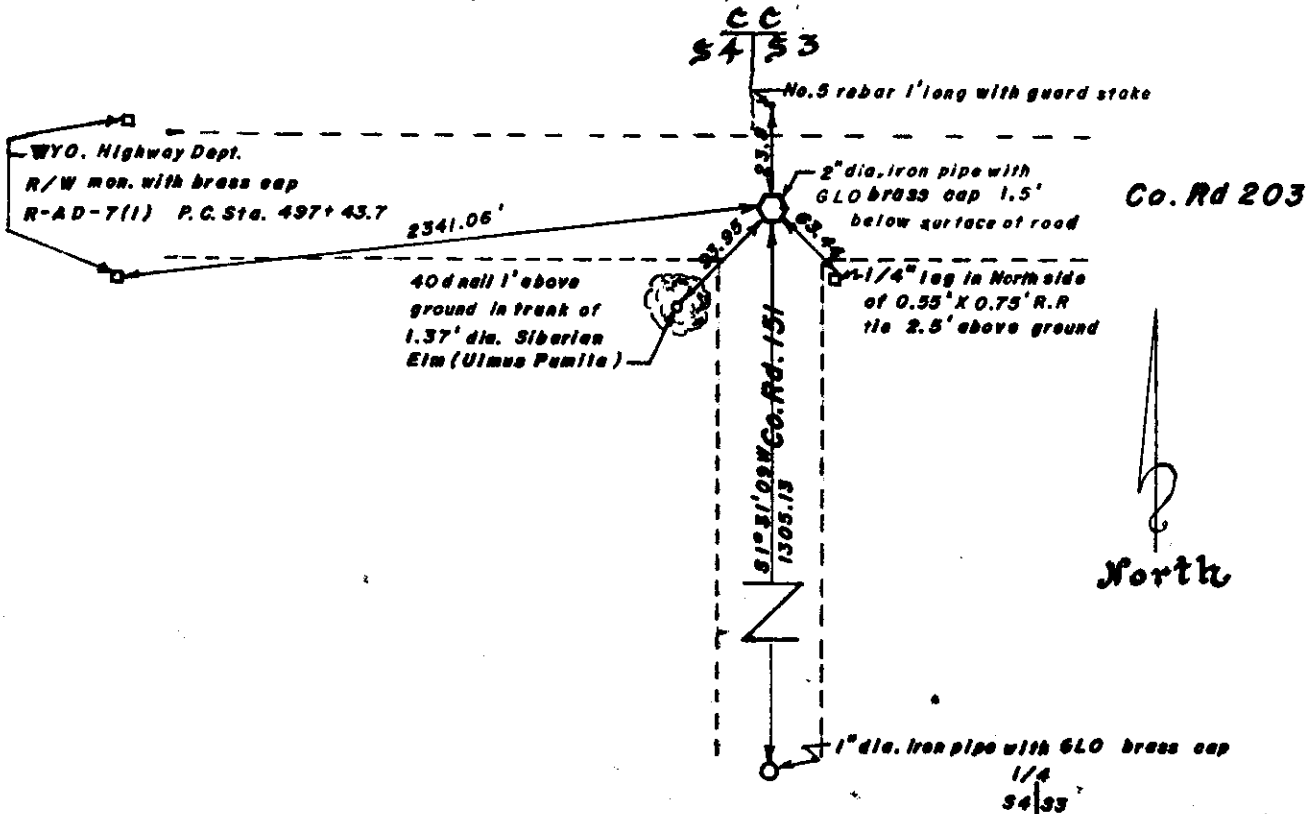
DESCRIPTION OF CORNER EVIDENCE FOUND, AND ORIGINAL RECORD (if known)

G.L.O. retracement survey accepted 28 May 1913 by the surveyor general of T.12N., R.62W. 6th.P.M. calls for ; 2" dia. iron pipe , 3ft. long with a brass cap , set with 2.5 ft. in the ground and 0.5 ft. above the ground.

DESCRIPTION OF MONUMENT AND ACCESSORIES ESTABLISHED TO PERPETUATE THE ORIGINAL LOCATION OF THIS CORNER:

Found monument as described 1.5 ft. below the surface of County road 203. Drove 40d nail in 1.37 ft. dia. Siberian Elm (Ulmus Pumilia) 1 ft. above ground on the Northerly side of the tree. the tree is situated in a shelter belt South & West of said monument a distance of 93.95 ft. Measured 63.44ft. to a R/R tie set on end for a fence corner as shown. Set #5 rebar 23.8 ft. on North side of Co. Rd. 203.

SKETCH, WITH COURSE AND DISTANCE TO ADJACENT CORNER IF DETERMINED IN THIS SURVEY. (May Sketch or Paste Reproduction on Reverse Side.)



See Other Side

I, Larry T. Perry S.S. certify that I have carefully performed ~~or reviewed~~ the work done on the diagrammed corner as reported on this recordation form and approve the same.

Larry T. Perry S.S. 3047
Signature of Surveyor Registration No.

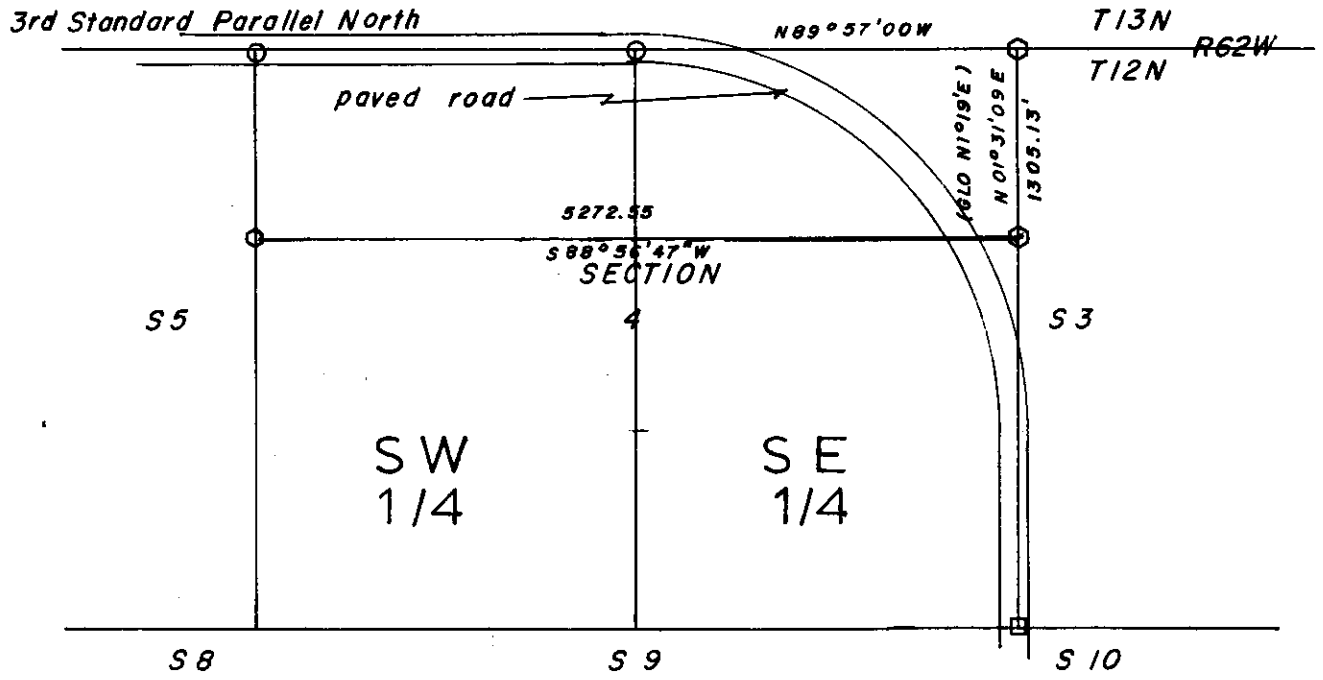
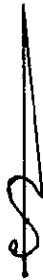
STATE OF WYOMING,
Office of Clerk and Recorder,
County of Teton

This "corner record" was filed for record on the NOV 1 day of 1982, 19____, was noted on the cross-index plat and is assigned page No.____, in book No._____.

James C. Whitehead
County Official

Cross Index No. _____	T. _____	R. _____	Mer. _____
_____	T. _____	R. _____	Mer. _____
_____	T. _____	R. _____	Mer. _____
_____	T. _____	R. _____	Mer. _____
_____	T. _____	R. _____	Mer. _____
_____	T. _____	R. _____	Mer. _____
_____	T. _____	R. _____	Mer. _____

1-13
9-13-12 R02
JB



- Pipe & Brass Cap Found
- Corner Found by R.C. Corbet LS 495, 3 Sep 74
- Corner Obliterated 1960 by Wyo. Highway Dept.